

BIOTRON
DIAGNOSTICS INC.

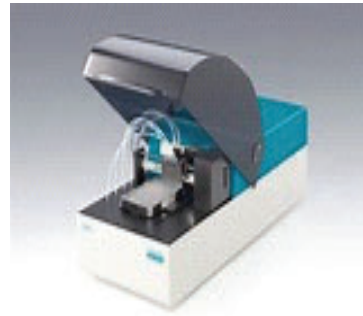
Product Reference List



A World of Excellence in In-Vitro Diagnostics

BIOTRON
DIAGNOSTICS USA

IMMUNOCHEMISTRY (EIA/ELISA TEST KITS)



THYROID

T3 uptake
Free T3
Free T4
TBG
S-TSH
T3
T4
TSH
Neonatal T
Neonatal TSH

TORCH

Rubella IgG
Rubella IgM
Toxoplasma IgG
Toxo IgM
CMV IgG,
CMV IgM
HSV I IgG
HSV I IgM
HSV II IgG
HSV II IgM

STEROIDS

17- (OH) Progesterone
Estriol
Cortisol (Serum//Saliva)
DHEA-S
Progesterone
Testosterone
Estradiol

HORMONES/ANALYTES

EBV-VCA IgG
EBV-VCA IgM
HGA EIA
IgE (total)
CRP C Reactive Protein
Turbidimetric Quantitative
Microalbumin Turbidimetric
DHES
CDT-Carbohydrate-Deficient
Transferrin
Calcitonin
ACTH (Adrenocorticotropic)
Hormone)
Intact-PTH
B2- Microglobulin

DIABETES MARKERS

Insulin
Microalbumin
Proinsulin
C-Peptide

AUTOIMMUNE DISEASES

ANA Screen IgG
Cardiolipin IgA
Cardiolipin IgG
Cardiolipin IgM
Mitochondrial Ab
Ds DNA IgG

ENA Screen

TPO IgG

Throglobulin (TG) Ab

CARDIAC MARKERS

Ck-MB

FABP

MPO

Myoglobin

Troponin I

C – Reactive Protein

CANCER MARKERS

AFP

B2MG

CA 125

CA 15-3

CA 19-9

CEA

Digoxin

ALLERGY

IgE

Ferritin

NEONATAL

T4 - Neonatal

TSH - Neotalal

17(OH) Progesterone - Neonatal

TBG - Neonatal

PRENATAL

PAPP

ANEMIA

Folate

B12/Folate

THYROID AUTOIMMUNE

Anti - Tg

Anti - TPO

INFECTIOUS DISEASES

Brucella IgG
Brucella IgM
Chlamydia IgA
Chlamydia IgG
Chlamydia IgM
Dengue Fever IgG
Dengue Fever IgM
Dengue NS 1
EBV - VCA IgA
EBV - VCA IgG
EBV - VCA IgM
H. Pylori IgA
H. Pylori IgG
H. Pylori IgM
Measles IgG
Measles IgM
Mumps IgG
Mumps IgM
Mycoplasma IgG
Mycoplasma IgM
Salmonella IgG
Salmonella IgM
Tuberculosis IgA
Tuberculosis IgG
Tuberculosis IgM
Treponema pallidum IgG
Treponema pallidum IgM
Treponema pallidum IgG/IgM
Chikungunya IgG
Chikungunya IgM
Zika IgG
Zika IgM
Leptosperia
Growth Hormone
HGH
VITAMINS
Vitamin A
Vitamin B5
Vitamin B12 (direct)
25(OH) Vitamin D
ESOTERIC ELISA
17a - Hydroxyprogesterone
Aldosterone
Andostenedione
DHT

UROFAST URINE REAGENT STRIPS



ONE-PARAMETER

Blood pH
Glucose Ketone
Protein Ascorbic Acid

TWO-PARAMETERS

Glucose/Protein Nitrite/Leukocyte
Glucose/Ketone Microalbumin/Creatinine
pH/Specific Gravity Glucose/Protein

THREE-PARAMETERS

Glucose/Protein/pH

FOUR-PARAMETERS

Glucose/Protein/Ph/Blood
Glucose/Protein/pH/Specific Gravity
Leukocyte/Nitrite/Protein/Glucose

FIVE-PARAMETERS

Blood/Ketone/Glucose/Protein/pH
Leukocyte/Nitrite/Blood/Protein/Glucose

SIX-PARAMETERS

Protein/pH/Blood/Ketone/Bilirubin/Glucose

SEVEN-PARAMETERS

Urobilinogen/Protein/pH/Blood/Ketone/
Bilirubin/Glucose

EIGHT-PARAMETERS

Glucose/Protein/pH/Ketone/Urobilinogen/
Bilirubin/Blood/Nitrite

NINE-PARAMETERS

Glucose/Protein/pH/Ketone/Urobilinogen
Bilirubin/Blood/Nitrite/Specific Gravity

TEN PARAMETERS

Glucose/Protein/pH/Bilirubin/Blood/Ketone Urobilinogen/Ketone/Nitrite/
Specific Gravity/Leukocyte

ELEVEN PARAMETERS

Glucose/Protein/pH/Bilirubin/Blood/Ketone Urobilinogen/Ketone/Nitrite/
Specific Gravity/Leukocyte/Ascorbic Acid



UROFAST-101 (ideal for physician's office or small lab) is a semi-automated and CLIA-waived 60 tests per hour urine strip reader with 1000 test memory, space-saving design has patient ID, and LIS capability, flip screen, and 110/220 volt design.

UROFAST-720 (ideal for small lab) is a semi-automated and CLIA-waived 500 tests per hour urine strip reader with 2000 test memory, space-saving design has patient ID, and LIS capability, flip screen, and 110/220 volt compatibility

**FERTILITY
FOREMOST PREGNANCY / OTC KITS**



Indirect Slide Test-Monoclonal
One-Step Urine Card Test
One-Step Urine Dipstick Test
Home Ovulation Test
Ultra-Early Pregnancy Detection

One-Step Urine/Serum Combo Card
Home Pregnancy Test Direct Slide
Strip Pregnancy Test
One-Step Urine Dipstick Test
Visual HCG Sign (+/-) Test

FOREMOST MALE FERTILITY / OTC KITS



Male Fertility Sperm Test Strip
Male Fertility Sperm Test (OTC)

Male Fertility Test Cassette
Male Fertility Test (POCT)

CHEMILUMINESCENT ASSAYS (CLIA) - LIA

ALLERGY

IgE

THYROID

T3

T4

Free T3

Free T4

TSH

HEPATITIS

HBsAg

Anti - HBs

TORCH

Rubella (IgG, IgM)

Toxoplasma (IgG, IgM)

CMV (IgG, IgM)

HSV I (IgG, IgM)

HSV II (IgG, IgM)

FERTILITY MARKERS

FSH

LH

hCG

Prolactin

S - FSH

S - LH

AUTOIMMUNE DISEASE

ANA Screen IgG

Cardiolipin IgA

Cardiolipin IgG

Cardiolipin IgM

Ds DNA IgG

ENA Screen

Thyroblobulin (Tg) antibody

Thyroid Peroxidase (TPO)

TgG

TUMOR MARKERS

Chromogranin A

PSA

CA 125

CA 15-3

Ca 19-9

CEA

AFP

STERIODS

ACTH

Estriol

Cortisol

DHEA - S

Estradiol

Progesterone

Testosterone

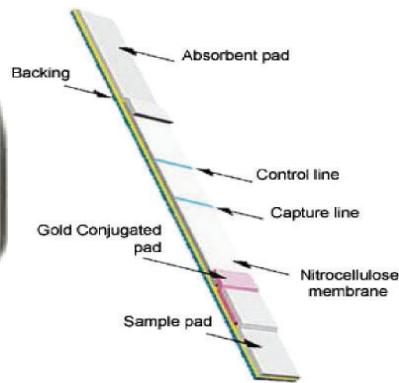
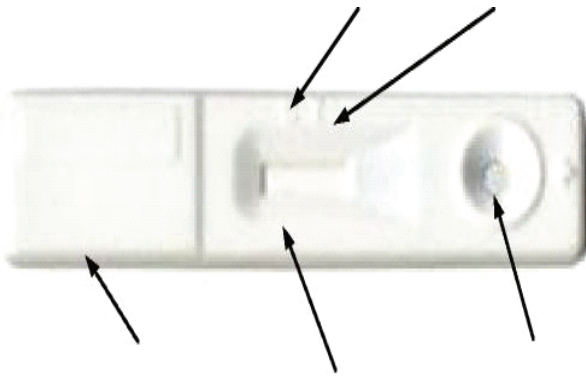
Free Testosterone

SEROFAST SEROLOGICAL KITS



SEROFAST ASO -	Latex Agglutination
(Antistreptolysin-0)	Slide Test
SEROFAST CRP -	Latex Agglutination
(C-Reactive Protein)	Slide Test
SEROFAST IM -	Hemagglutination
(Infectious Mononucleosis)	Slide Test
SEROFAST IM -	Latex Agglutination
(Infectious Mononucleosis)	Slide Test
SEROFAST RA FACTOR -	Latex Agglutination
(Rheumatoid Factor)	Slide Test
SEROFAST RPR - Macroscopic Nontreponemal Flocculation	Test
(Rapid Card Test for Detection of Syphilis)	Slide Test
SEROFAST SLE -	Latex Agglutination
(Detection of Antinucleoprotein factors associated with SLE)	Slide Test
SEROFAST ANA Latex Agglutination	
(Detection of Antinuclear Antibodies associated w SLE)	Slide Test
STAPH A	Latex Agglutination
(Detection of Staphylococcus Aureus)	Slide Test
STREP A	Hemagglutination
(Detection of Streptococcal Antibodies)	Slide Test
HBsAg	Latex Agglutination
(Detection of Hepatitis B Surface Antigen)	Slide Test
RUBELLA	Latex Agglutination
(Detection of Rubella Virus Antibodies))	Slide Test
FOB - Hema-screen	Hemagglutination
Detection of occult blood in feces/gastric aspirate	Slide Test
SEROFAST TOXO	Latex Agglutination
Toxoplasma Gondii	Slide Test
SEROFAST DIMER	Latex Agglutination
D - Dimer (FDP)	Slide Test
SEROFAST TPHA	Hemagglutination
Treponema Pallidum Hemagglutination	Slide Test

BIOFAST INFECTIOUS DISEASE RAPID TEST KITS (Export Only)



HBsAg (card/strip)(Serum/Plasma)	HBsAb (Card/Strip)(Serum/Plasma)
HBeAg (card/strip)(Serum/Plasma)	HBeAb (Card/Strip)(Serum/Plasma)
HB Core Ab (card/strip)(Serum/Plasma)	HCV Ab (Card/Strip)(Serum/Plasma)
HBV-5-combo (HBsAg,HBsAb,HBeAg,HBeAb,HBcAb) (Card)(Serum/Plasma)	HIV 1+2 Ab (Card/Strip)(W Blood))
HIV 1+2 Ab (card/strip)(Serum/Plasma)	HIV 1+2 Ab (Card/Strip)(W Blood)Tri-line
HIV 1+2 Ab (card/strip)(Serum/Plasma)Trii-line,	H.Pylori (Card)(Serum/Plasma)
HBsAg/HCV/HIV Combo(Card)(Serum/Plasma)	H.Pylori (Card)(Fecal Extract)
Treponema P Ab(Card/Strip)(Serum/Plasma)	Malaria Antigen(pf/pv)(Card)(W Blood)
Neisseria Gonorrh(Card/Strip)(Serum/Plasma)	Malaria Antigen (pf/pan)(Card)(W Blood)
Malaria Antigen (pf)(Card/)(W Blood)	Cholera VibrioO139(Card/)(Fecal/Water)
Cholera Vibrio O1(Card/)(Fecal/Water)	Cholera VibrioO1Inaba(Card/)(Fecal/Water)
Cholera Vibrio O1 Ogawa(Card/)(Fecal/Water)	DengueVirus IgG/IgM Ab(Card/Strip)(Serum)
Cholera Vibrio O1 Combo(Card/)(Fecal/Water)	Dengue Virus NS1 Ab (Card/Strip)(Blood)
DengueVirusIgG/IgM Ab(Card/Strip)(Plasma)	Dengue Virus NS1 Ab(ard/Strip)(Plasma)
DengueVirus Antigen Combo(Card)(Serum)	Procalcitonin (Card/Strip)(Serum/Plasma)
Palguae F1Ag Y Pestis(Card/)(Fecal/Extract)	Rota Virus (Card/Strip)(Fecal Extract)
Adeno Virus (card/strip)(Fecal Extract)	
Rota Virus/Adeno Virus Combo -3 lines (Card/Strip)(Fecal Extract)	Streptococcus Group A(Card)(Throat Swab)
Chlamydia Trachomatis (card/)(Veg/Ure Swab)	Salmonella Typhi Ag(Card/Strip)(W Blood/Fecal)
Salmonella Typhi Ag(Card/Strip)(Serum/Plasma)	SalmonellaTyphiPara Ag(Card/Strip)(Blood/Fecal)
SalmonellaTyphiParaAg(Card/Strip)(Serum/Plas)	SalmonellaTyphiPara Ag(Card/Strip)(Blood/Fecal)
Salmonella Typhi /Para Typhi Antigen Combo(Card)(W Blood/Fecal Extract)	Chagas Antibody(Card/Strip)(Serum/Plasma)
Chikungunya IgG/IgM(Card/Strip)(Serum/Plasma)	Influenza A/B Ag(Card/Strip)(Serum/Plasma)
Zika Virus(Card/Strip)(Serum/Plasma)	H.Pylori-FetoProteinAg(Card/Strip)(Serum/Plasma)
Toxoplasma(Card)(Serum/Plasma)	E.Coli (Card) (Serum/Plasma)
ProstateSpecificAntigen(Card)(Serum/Plasma)	Listeria (Card) (Serum/Plasma)
Lyme (Card)(Serum/Plasma)	E.Coli (Card) (Serum/Plasma)
Mono (Card)(Serum/Plasma)	

CLIA WAIVED & OTC TEST

Urofast Urine Reagent test Strips	Ethanol Alcohol Saliva Card
Cholesterol Total Card	Cholesterol LDL Card
Cholesterol HDL	Pregnancy Home Test Card
Visual HCG Test Card (+/-)	LH Test Card
FSH Test Card	Ovulation Test Card
Syphilis Test Card	Influenza A/B Test Card
Hemoglobin A1c (card)	Strep A Card
Mono (infectious Mononucleosis) Card	H Pylori (HP) Card
Hepatitis C Virus (HCV) Card	Fecal Occult Blood Stool
Fecal Occult Blood Gastric	Prothrombin Time Test Strips
Drug of Abuse Strips and Cards	Dr. G Glucosemeter Blood Glucose Monitoring Kit

BIOFAST DRUG SCREENING TEST



One Step Drug Test

Amphetamine (card/strip)	Barbiturates (card/strip)	Benzodiazepines (card/strip)
Buprenorphine (card/strip)	Cocaine (Card/Strip)	Ecstasy (MDMA) (card/strip)
Fentanyl (card/strip)	Ketamine (card/Strip)	Marijuana (THC) (card/strip)
Marijuana Synthetic (card/strip)	Methadone (card/strip)	Methadone Metabolite (card/strip)
Morphine (card/strip)	Methamphetamine (card/strip)	PCP (card/strip)
Opiates (card/strip)	Tramadol (card/strip)	Tricyclic Antidepressants(card/strip)

Multi-Drug Card

MOR/MET	COC/THC/MOR/MET/PCP	BZD/BAR
COC/THC/MOR/AMP/BZD	COC/THC/MOR	AMP/COC/THC/MOR/BZD/MET
BZD/BAR/PCP	BZD/BAR/MTD	COC/THC/MOR/AMP
COC/THC/MOR/MET	COC/THC	AMP/MOR/COC/THC/BZD/PCP
On-Site Multi-Drug Test Cup	Drug Adulteration Test Strip	Alcohol Saliva Test Kit
Breath Alcohol Test Kit		

BIOFAST BLOOD BANK REAGENTS

Blood Groups

Blood Grouping Anti-A	Blood Grouping Anti-B
Blood Grouping Anti-AB	Blood Grouping Anti-D

Febrile Antigens

Brucella Abortus	Brucella Melitensis	Brucella Suis
Parathyroid A	Parathyroid B	Parathyroid C
Proteus OX19	Proteus OX2	Proteus OXK
Salmonella Group A	Salmonella B	Salmonella Group C
Thyroid H	Thyroid O	

Febrile Controls (Positive & Negative)

Febrile Kits

Febrile Kit.	(TO,TH,PA,PB,PX19,BA) + Controls (Positive & Negative)
Widal 400 Kit.	(TO,TH,PA,PB) + Controls (Positive & Negative).
Widal 800 Kit.	(TO,TH,PA,PB,PC,SGA,SGB,SGC) + Controls (Positive & Negative).

BLOOD BANK REAGENTS USING GEL TECHNOLOGY



ABO blood typing

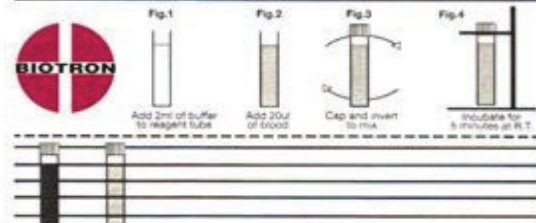
ABO subgroup Typing

This technology uses small plastic cards that contain six microtubes, so multiple patients can be run on one card. Each microtube has small gel particles that contain a diluent or reagent. The patient samples are added to each tube, incubated, centrifuged and read for agglutination. "No agglutination" occurs when the red cells settle at the bottom, while strong agglutination remains at the top of the tube. ABO blood typing, antibody screens and panels, and DATs are just a few of the routine tests that can be run on these gels

FASTCHEM CLINICAL CHEMISTRY TEST KITS



SICKLE CELL TEST PROCEDURE OUTLINE



Acid Phosphatase (Color)	Acid Phosphatase (Kinetic)
Albumin	Total Albumin
Alkaline Phosphatase (Color)	Alkaline Phosphatase (Kinetic)
Ammonia (Color)	Amylase (Color)
Amylase (Kinetic)	Total Bilirubin
Direct Bilirubin	Bile Acids, End Pt
CRP High Sensitivity	Calcium
Calcium (AZIII)	Carbon Dioxide-340nm
Cholesterol (Kinetic)	Cholesterol (Color)
Cholesterol (Liquid)	Chloride
Cholinesterase (ChE)	Creatine Kinase (Color)
Creatine Kinase	CK-MB (Kinetic)
CK-MB (Control)	Creatinine (Color)
Creatinine (Kinetic)	GT (Color)
GGT (Kinetic)	Glucose (Kinetic)
Glucose (Trinder)	Glucose (Liquid)
Glucose (Hexokinase)	Glycohemoglobin A1C
Glycohemoglobin Controls	LDH (Color)
LDH-L (Kinetic)	Lipase (with standard)
HDL Cholesterol	HDL Cholesterol Direct
Hemoglobin	Magnesium
Magnesium-Xylydyl Blue	Phosphorus (Color)
Inorganic Phosphorus (UV)	Potassium
Total Protein	Sickle Cell
Sickle Cell - Unitized	Sickle Cell - Stat
SGOT (Colorimetric)	AST/GOT (Kinetic)
SGPT (Color)	ALT (Kinetic)
Sodium	Total Lipids
Triglycerides (GPO)	Urea Nitrogen (Color)
Urea Nitrogen (Kinetic)	Uric Acid (Color)
Uric Acid (Liquid)	Serum Iron/IBC
HBD (Colorimetric)	GDPH
VMA	Aldolase

LIQUID CHEMISTRY REAGENTS



Alk. Phosphatase Kinetic
Glucose, Trinder
BUN Kinetic
Triglycerides, GPO-Trinder

Glucose, Hexokinase
AST (SGOT) Kinetic
Lipase, Colipase, Kinetic
γ-GT, Kinetic, Soluble

ALT (SGPT) Kinetic
LDH, Kinetic
Cholesterol, End Point
Uric Acid, Uricase Color

BULK REAGENTS

Clinical Reagents Form

Beckman Synchron CX* 4,5,7
Bio Chem ATAC* 6000/8000
Boehringer Mannheim
Hitachi*704/705/717/736/737/747/911
Corning 550Express* Express Plus*Coulter*
Olympus AU5000*
Fara* Mira* MiraS*

Clinical Reagents Single Vials (Unitized Reagents)

Bio-Dynamics Unimetres 250/300
Stanbio Serometer 360/370/375/380
Technicon RA* 100/500/1000,XT*
Optichem
Roche Cobas Bio
Sigma

RESEARCH CHEMISTRIES

Adenosine Deaminase (ADA)(Dual vial liquid stable)
α-L-fucosidase (AFUO) (Single vial liquid stable)
SGPT/ALT (Alanine Aminotransferase) (End point)
hs CRP (immunoturbidimetric),(Dual vial liquid stable)
LDL Cholesterol (Direct)
Bile Acids -Total (enzymatic)
Myeloperoxidase Plasma (enzymatic)
Urinary(NAG) (N-acetyl-b-d-
Lipoprotein LP(a) (Immunoturbidimetric) (Dual vial liquid stable)
Apolipoprotein A-1 (Immunoturbidimetric) (Dual vial liquid stable)

5-Nucleotidase (Dual vial liquid stable) (Liquid stable)
HbA 1 c - Direct (enzymatic)(Liquid stable)
Homocysteine (enzymatic) (Dual vial liquid stable)
Apolipoprotein B (Immunoturbidimetric)
SGOT/AST (Aspartate Aminotransferase) (End point)
Lithium (enzymatic)
BUN (Blood Urea Nitrogen) (End point)
Cystatin C (Immunoturbidimetric)
Fructosamine (enzymatic) (Dual vial powder & diluent)

CONTROLS

GENERAL CHEMISTRY CONTROL, UNASSAYED Levels 1, 2 & 3

Tri-Level Unassayed General Chemistry Control Levels 1, 2 & 3 Analytes: AAT, ACET, ACP, ALB, ALP, ALT, AM IK, AMY, ApoA1, ApoB, AST, BICARB, C3, C4, CA, CARB, CER, CHE, CHL, CHOL, CK, CKMB, CORT, CREA, DBIL, DIG, ETOH, FE, PER, GGT, GENT, GLU, HAPT, hcG-0, HDL, IgA, IgG, IgM, K, LACT, LDH, LDL, LIP, LITH, MG, NA, OSM, PAMY, PAB, PHENO, PHENY, PHOS, SAL, T3U, fB, TotT3, fT4, TotT4, TBIL, THEO, TOB, TP, TSH, TOB, TRF, TRIG, UA, UIBC, UREA, VA, VBu

hsCRP SERUM PROTEIN CONTROL Tri-Level hsCRP Serum Protein Control Levels 1, 2 & 3

IMMUNOASSAY CONTROL Tri-Level Immunoassay Control & Minipack

Analytes: ACTM, AFP, AMIK, CARB, CEA, Cortisol, DHEA-S, DIG, DIS, E2, E3, ETHO, FE, FOL, FSH, GENT, hCG, R-hCG, hGH, IgA, IgE, IgG, IgM, INS, LH, LIDO, LI, NAPA, PHENO, PHENY, PRIM, PROC, PRG, PRL, PSA, fPSA, QUIN, SALY, fT3, T3, T3U, fT4, T4, T, THEO, THYRO, TOB, TCA, TSH, VALP, VANC, VB12

ImmunoTROL® SERUM PROTEIN CONTROL Levels 1, 2 & 3

LIPID CONTROL Levels 1 & 2 (ApoA1, ApoB, CHOL, HDL, LDL, TG)

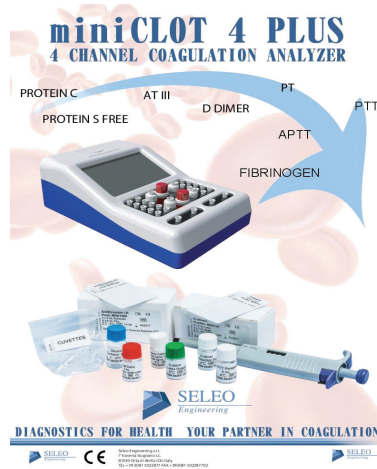
MICROALBUMIN CONTROL, Levels 1 & 2

TUMOR MARKER CONTROL Levels 1, 2 & 3 (AFP, CEA, CA15-3, CA19-9, CA125, CA72-4, CA27-29, CYFRA 21-1, NSE, PSA, fPSA, Thyroglobulin, and 3 serum proteins: B2M, FER, and hCG.

URINALYSIS CONTROL DipStrip Bi-Level, MicroStrip Bi-Level. (BIL, Blood, CREAT, GLU, KET, LEUKO, MA, Nitrite, pH, Protein, SG, URO, * Red and White Blood Cells, Crystals

URINE CHEMISTRY CONTROL Bi-Level (AMY, BUN, CA, CHL, CORT, CREA, GLU, hCG, K, MA, MG, NA, OSM, pH, PHOS, SG, TP, UA

HEMOFAST COAGULATION REAGENTS



Prothrombin Time

PT-HS with Calcium
(High Sensitivity ISI 1.1)
PT-LS with Calcium
(Low Sensitivity ISI 1.8)

Activated Partial Thromboplastin Time

APTT (Ellagic Acid Activated)

Coagulation Fibrinogen

FIB (Thrombin time Test) Kit

Fibrinogen Controls (Normal and Abnormal)

Calcium Chloride 0.020M

Coagulation Plasma Controls

(Levels 1,2,3)

Normal

Abnormal (Low)

Abnormal (High)

(Ellagic Acid)

(Ellagic Acid)

(Ellagic Acid)

(Ellagic Acid)

(Ellagic Acid)

Imidazole Buffer

BIOMARKERS

CARDIAC TESTS

Myoglobin

MLC

CK-MB

Troponin I

CK - M13

BNP

CK-MB/Myoglobin

Troponin I /Myoglobin

CK-MB/Myoglobin/Troponin I

CK-MB/Myoglobin/Troponin I /IMLC

hsCRP

FABP

CANCER MARKER

AFP (card)

CEA (card)

PSA (Serum/Blood card-1 Ref)

PSA (Blood card- 2 References)

Transferrin

FOB Fecal Occult Blood

OCA Ovarian cancer Antigen

BCA Breast cancer Antigen

GCA Gastrointestinal Cancer Antigen

FOB Specific

DIABETES



Advanced Dr. G. Smart Glucosemeter - Series (1,2, 3)



Dr. G. Glucosemeter (code/codeless)



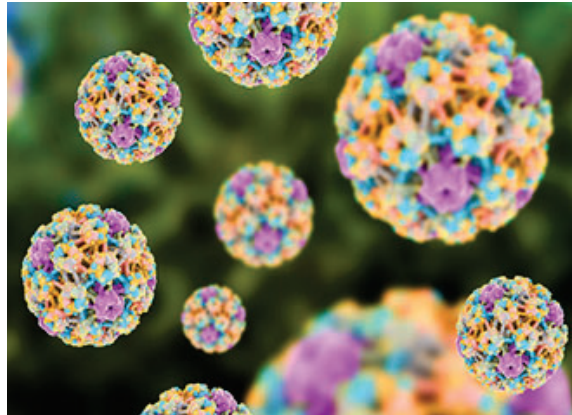
Dr. G. Smart Glucosemeter Test Strips

Immunofluorescent Assays (IFA)



- IFA- Chagas** (Indirect fluorescent assay for Chagas)
- IFA- Toxoplasmosis** (Indirect fluorescent assay for Toxoplasmosis)
- IFA-Hidatitdosis** (Indirect fluorescent assay for Hidatitdosis)
- IFA- Syphilis** (Indirect fluorescent assay for Syphilis)
- IFA - Triquinosis** (Indirect fluorescent assay for Triquinosis)
- DFA – Chlamydia T** (Direct fluorescent assay for Chlamydia Trachomatis)
- IFA – anti DNA** (Indirect fluorescent assay for anti-native, double stranded DNA)
- IFA – ANA HEp-2** (Indirect fluorescent assay for anti-nuclear antibodies using HEp-2cell)
- IFA-ANA-AMA-ASMA-APCA** (Indirect fluorescent assay for anti-nuclear, ant mitochondrial antibodies, anti-smooth muscle & anti parietal antibodies)
- IFA – ANA** (Indirect fluorescent assay for anti-nuclear antibodies)
- IFA – AMA** (Indirect fluorescent assay for anti-mitochondrial antibodies)
- IFA – ASMA** (Indirect fluorescent assay for anti-smooth muscle antibodies)
- IFA – APCA** (Indirect fluorescent assay for anti-parietal cells antibodies)
- IFA – AMA-ASMA-APCA** (Indirect fluorescent assay anti mitochondrial anti smooth muscle and parietal cells antibodies)
- IFA – LKM** (Indirect fluorescent assay for liver-kidney microsomes antibodies)
- IFA – EMA IgA** (Indirect fluorescent assay for anti endomysial antibodies ,IgA Class)

GenoFast MOLECULAR DIAGNOSTICS



- HPV - MHPVF-B** (Detects **Human Papillomavirus** 15 High Risk types)
- HPV- MHPVF1618-B** (Detects **Human Papillomavirus** 15 types of High Risk in single tube + HPV16 & 18)
- HPV- GHPVF-B** Detects **Human Papillomavirus** 15 types High Risk with real time IFD)
- HPV- MHPVPCR-B**(Detects **Human Papillomavirus** 15 types High Risk genotyping 15 04 80 03)
- HPV- MHPVPCR1618-B** Detects **Human Papillomavirus** 15 types High Risk 15 04 80 03 PCR amplification)
- BCD-100** (Detects **Clostridium Difficile** with PCR amplification analysis)
- BCID-100** (Detects **Clostridium Difficile** with PCR isothermal analysis)
- BICB-100** (Detects **Coxiella Burnetii** with PCR amplification analysis)
- BICB -100** (Detects **Coxiella Burnetii** with isothermal amplification analysis)
- BMP-100** (Detects **Mycoplasma Pneumonia** with PCR amplification analysis)
- BIMP-100** (Detects **Mycoplasma Pneumonia** with isothermal amplification analysis)
- BNG-100** (Detects **Neisseria Gonorrhoeae** with PCR amplification analysis)
- BING-100** (Detects **Neisseria Gonorrhoeae** with isothermal amplification analysis)
- BYP-100** (Detects **Yersinia Pestis** with PCR amplification analysis)
- BIYP-100** (Detects **Yersinia Pestis** with isothermal amplification analysis)
- BBA-100** (Detects **Bacillus Anthracis** with PCR amplification analysis)
- BIBBA-100** (Detects **Bacilli's Anthracis** ith isothermal amplification analysis)
- BFT-100** (Detects **Francisella Tularensis** with PCR amplification analysis)
- BIFT-100** (Detects **Francisella Tularensis** with isothermal amplification analysis)
- BHA-100** (Detects **Haemophilus** with PCR amplification analysis)
- BIHA-100** (Detects **Haemophilus** with isothermal amplification analysis)
- BLE-100** (Detects **Legionella** with PCR amplification analysis)
- BILE-100** (Detects **Legionella** with isothermal amplification analysis)
- BLI-100** (Detects **Listeria** with PCR amplification analysis)
- BILI-100** (Detects **Listeria** with isothermal amplification analysis)
- BSA-100** (Detects **Salmonella** with PCR amplification analysis)
- BISA-100** (Detects **Salmonella** with isothermal amplification analysis)
- BSTA-100** (Detects **Staphylococcus** with PCR amplification analysis)
- BISTA-100** (Detects **Staphylococcus** with isothermal amplification analysis)
- BSTR-100** (Detects **Streptococcus** with PCR amplification analysis)
- BISTR-100** (Detects **Streptococcus** with isothermal amplification analysis)
- BTRI-100** (Detects **Trichomonas Vaginalis** with PCR amplification analysis)
- BITRI-100** (Detects **Trichomonas Vaginalis**with isothermal amplification analysis)
- BIMSTD-100** (Detects **multiple STD infections** with isothermal amplification analysis)
- BIHBV-100** (Detects **HBV** with isothermal amplification analysis)
- BIHCV-100** (Detects **HCV** with isothermal amplification analysis)
- BIHIV-100** (Detects **HIV** with isothermal amplification analysis)
- BIMB-100** (Detects **HBV, HCV, HIV** with isothermal amplification analysis)
- BHNGS-100** (Detects **Hot Spot Cancer** based on Illumina NGS platform)
- BLNGS-100** (Detects **Lung Cancer** based on Illumina NGS platform)
- BBNGS-100** (Detects **Breast Cancer** based on Illumina NGS platform)
- BCNGS-100** (Detects **Colorectal Cancer** based on Illumina NGS platform)
- BTDPCR-100** (Detects **Tumor Mutation** using digital PCR amplification analysis)
- BTDPCR-100** (Detects **Aneuploidy** using digital PCR amplification analysis)

MICROBIOLOGY REAGENTS

A World of Excellence in Microbiology



Collection and Transport Specimen Kits, Blood Culture Bottles, Dehydrated Media, Ready to Use Media, Mycobacteria Culture Media, Media Slants (plain and antitubercular drugs), Antimicrobial-Susceptibility Discs, Mycobacterial Rings and Chemotherapeutic Agents, and Environmental Microbiological Analysis Kits for Water, Food, Dairy and Hygiene. ***(Please ask for Biotron-Vibles Microbiology Catalog for detailed products)***

VETERINARY TEST KITS

CHEMISTRIES

Album	Aldolase	Alk Phosphatase
ALT (SGPT)	Amylase	Ammonia
AST (SGOT)	AST (SGOT) Kinetic	Bile Acids Direct & Total
Bilirubin Total	BUN Kinetic	BUN
Calcium	Carbon Dioxide	Chloride
Cholesterol	Cholesterol HDL	Cholesterol LDL
Creatine Kinase-NAC	Creatinine	Cholenesterate
Copper	CRP	Fructosamine
Ferritin	GLDH	γ - GGT
Glucose	Glutathione Reductase	Iron/TIBC
Inorganic Phosphorus	LDH	Lactate
Magnesium	Microalbumin	Total Protein
Potassium	Sodium	Triglycerides
Urinary Protein	Uric Acid	Zinc

RAPID TEST CARDS

Feline Leukemia Virus	Feline Immuno Virus	Heart Worm
Lyme Disease	Parvo Virus	

UROFAST ANIMAL HEALTH TEST STRIPS



BUN Whole Blood Test Strips

MUN Milk Test Strips

TEN PARAMETERS (Urine Test Strips: Glucose/Protein/pH/Bilirubin/Blood/Ketone/Urobilinogen/
Ketone/Nitrite/Specific Gravity/Leukocyte)

BHB in Milk Test Strips

Protein/Creatinine Urine Reagent Test Strips



VET-10 Urine Test Strip Analyzer

VET-10 URINE TEST STRIPS ANALYZER (ideal for veterinarians office or small lab) is a semi-automated and CLIA-waived 60 tests per hour urine strip reader with 1000 test memory, space-saving design has patient ID, and LIS capability, flip screen, and 110/220 volt design.

BIODEFENSE TEST KITS

Water/Food/Diary/Hygiene/Environmental Microbiological Analysis Kits

Water Analysis Kit (Presumptive Test) (to enumerate the coliform count from a sample of drinking water/swimming pool/ice cubes/waste water)

Water Analysis Kit (Confirmatory Test) (to enumerate the coliform count from a sample of drinking water/swimming pool/ice cubes/waste water)

Food/Diary/Quality Assurance Kit (to detect, plate count Coliform E-Coli, Yeast, Mold count from any food sample)

Food Poisoning Detection Kit. (to detect food poisoning causing bacteria from any food sample which includes Salmonella, Streptococcus and Staphylococcus)

Personal Hygiene Kit. (to detect Staphylococci count, E-Coli from the hands, nails, nasal cavities)

New Biodefense Kits are under research and development

UROFAST AQUA CHECK STRIPS

Nitrates
pH

Hardness
Nitrite

Alkalinity

URINARY TRACK INFECTION CHECK STRIPS

Leukocytes

Nitrites

VAGINAL pH CHECK STRIPS

pH

BREST MILK CHECK STRIPS

Protein

Calcium

Zinc

MEDICAL TECHNOLOGY FOR SALE/LICENSE/TRANSFER &TURN KEY PROJECTS IN IVD KITS Available

BIOTRON DIAGNOSTICS INC.

A World of Excellence in **In-Vitro Diagnostic Kits & Reagents**

Biotron Diagnostics Inc., formerly known as Nuclear Diagnostics Inc., and Sterling Biochemical Inc. has a history of over 30 years in successfully developing, designing, producing, selling and marketing a complete line of diagnostics reagents and kits for use in Hospitals, Medical Laboratories, Research Institutions within the Health Care and Pharmaceutical Industries. Its strength stems from a foundation of knowledge and experience in product development with a commitment to quality and cost effectiveness in the biotechnology field.

Biotron Diagnostics Inc.'s products are developed, designed and produced with unique formulations using state-of-the-art technology. All in-vitro diagnostics reagents and kits are produced using GMP rules and regulations of the United States Food and Drug Administration. Products are marketed in, and legally exported from, the USA.



We are very proud of our high-quality FDA approved product lines, particularly "Research Chemistries" & Immunochemistries, which are currently being sold to institutions such as: CDC, NIH, Prestigious Universities, Research Centers, Cancer Research Institutions, and other Government and Prestigious Private Hospitals. Biotron Diagnostics has been certified as a US Government Supply Administration Federal Vendor. Products are competitively priced. Biotron Diagnostics' main Mission is to produce and distribute USA Made and FDA approved IVD Kits and Reagents globally. OEM, Private Label, Bulk Reagents/Components, CRO and Technology Transfer Services are available. Presently Biotron Diagnostics Inc. has three international branches (India, China, and Latin America) and a worldwide distribution network.

Biotron Diagnostics has a reputation for high quality, performance and innovation. Biotron continues to provide high quality standard IVD Kits and Reagents while meeting the changing needs of the IVD industry. The company's main objective is to continue to maintain high quality standards using the latest inventions, discoveries and technologies to develop its products. The strength of the company stems from knowledge and experience in high quality product development provided by Ph.D. Chemists, Biologists and Medical Doctors.

Sharan D. Dominguez M.D
Executive Vice President

Anita J. Gagneja
COO

Dr. George Gagneja
President/Chairman

Rudy Dominguez
Director

Jim Kemp
Sales Director .

BIOTRON DIAGNOSTICS USA

615 N Palm Avenue, Hemet CA 92543, USA Tel: (951)658-7766. Fax: (951)658-7999

[Email: sales@biotrondiagnostics.com](mailto:sales@biotrondiagnostics.com)

www.biotrondiagnostics.com